

# Mobility Suite

## Comprehensive control of the complete client spectrum

AEROHIVE NETWORKS MOBILITY SUITE delivers simplified enterprise networking and personalized mobility with a complete cloud-enabled mobility management solution that extends visibility and control to the very edge of the network – the connected mobile devices – by making them part of the Hive. The Mobility Suite is comprised of applications and functionality that combined with Aerohive’s industry-first Cooperative Control platforms simplifies onboarding, management, and troubleshooting for all connected clients in a mobile first enterprise.

The Aerohive Mobility Suite featuring Client Management and ID Manager applications leverages Aerohive’s industry-first Cooperative Control HiveOS platforms and extends management and control over the complete spectrum of clients, from transient guests to company-issued devices. By combining simplified onboarding, management, and troubleshooting with context-based visibility, policies, and enforcement for all connected clients, Aerohive can provide a personalized mobile experience for every user and device on the network.

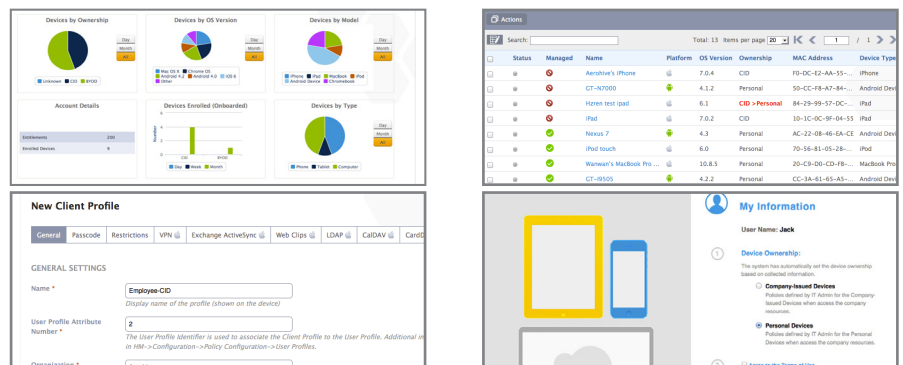


The Aerohive Mobility Suite provides Complete Control over Mobility

### Key Components

#### Client Management Application

Client Management combines device configuration, management, and monitoring with policy-based network access and an employee self-service portal into a single product for companies desiring to support BYOD in conjunction with CID (company-issued devices). The cloud-enabled application allows an administrator to clearly differentiate between issued devices and BYOD, giving them the additional layer of context necessary to create granular policies and controls for a mobile first enterprise.



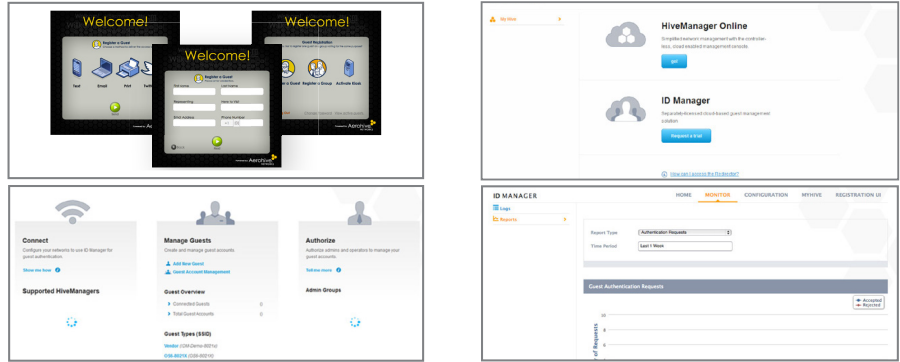
[www.aerohive.com/products/cloud-services-platform/client-management](http://www.aerohive.com/products/cloud-services-platform/client-management)

#### ID Manager Application

ID Manager is the first enterprise guest management system to leverage the cloud to simplify and automate the deployment and maintenance of enterprise guest management. This application combines industry-leading authentication integration with the Aerohive Cloud Services Platform to eliminate the need for any additional hardware or software to deliver a scalable, simple-to-administer enterprise guest management solution that streamlines the on-



boarding of visitors. Whether required at a single site or over a globally distributed, multi-lingual company, ID Manager's cloud-enabled flexibility and simplicity provide a complete solution for every site.



[www.aerohive.com/products/cloud-services-platform/id-manager](http://www.aerohive.com/products/cloud-services-platform/id-manager)

### Partner API Integration

By using the Aerohive solution to seamlessly onboard and install partner MDM agent software, administrators can offload the significant workload of provisioning the profile on connecting devices as well as make sure that profile stays installed. Administrators can even use the combined solution to ensure devices remain compliant to the security profile, and can quarantine devices if they violate the compliance requirements and send instructions to the user to remediate the device.



[www.aerohive.com/partners/solution-partners/mobile-device-management-mdm](http://www.aerohive.com/partners/solution-partners/mobile-device-management-mdm)

### More Resources

Products Overview

[www.aerohive.com/products/overview.html](http://www.aerohive.com/products/overview.html)

Resource Center for Case Studies, Videos, and Other Collateral

[www.aerohive.com/resources](http://www.aerohive.com/resources)

Promotions

[www.aerohive.com/promotions](http://www.aerohive.com/promotions)



Contact us today to learn how your organization can benefit from Aerohive wireless LAN architecture.

330 Gibraltar Drive  
Sunnyvale, CA 94089  
toll free 1-866-918-9918

phone 408-510-6100  
fax 408-510-6199  
[www.aerohive.com](http://www.aerohive.com)

[info@aerohive.com](mailto:info@aerohive.com)  
AP\_1013\_AAG